

MCH Center for Women & Infants Odessa, Texas

Loss Event: Fire, Smoke and Water Damage



Just five weeks after an electrical fire isolated in a physician room on the fourth floor caused significant fire, smoke and water damage, the Medical Health Care System (MCH) Center for Women & Infants reopened for patient care.

“Patient safety is our number one priority at Medical Center Health System, and we have worked hard over the last month to ensure that the Center for Women & Infants is ready for our staff to begin caring for expectant moms and their babies,” said Bill Webster, Medical Center Health System President and CEO.

Working closely with the insurance provider, BELFOR immediately dispatched an all-star emergency response team to the medical center. **BELFOR Property Restoration**, **BELFOR Technical Services** and **DUCTZ**, another BELFOR company specializing in air duct cleaning, joined forces for the recovery effort. The teams worked around the clock to quickly restore medical center operations and patient care.



Recovery services included:

- Providing temporary power for the building while permanent electrical repairs were made;
- Assisting with the preservation of fire damaged building components;
- Water removal/extraction and dehumidification;
- Smoke and odor removal;
- Intrusive cleaning of walls, ceilings and floors;
- Sterilization of all patient rooms and surgical areas;
- Air handlers and air duct cleaning throughout the building;
- Sterilization and re-certification of medical equipment and electronics for patient care;
- Cleaning textiles in patient rooms and common areas;
- Providing temporary furniture for lobbies and common areas.

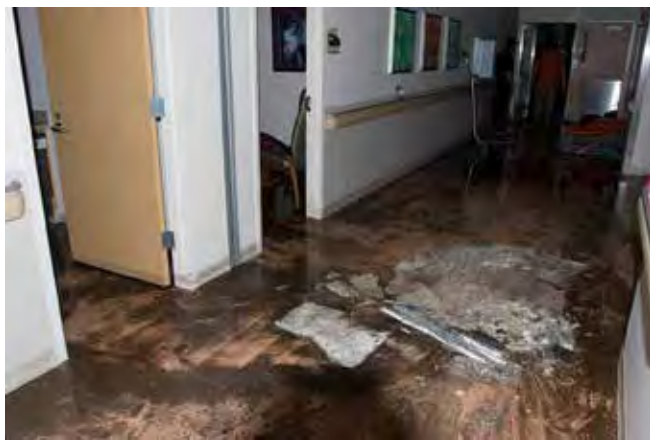
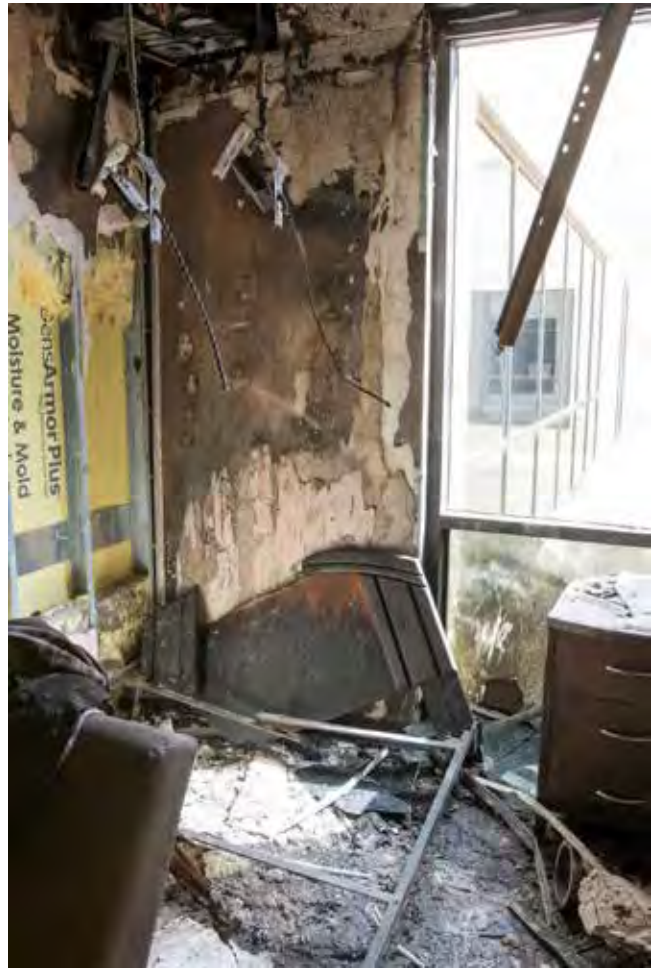


The MCH Center for Women & Infants is a \$42 million center that includes 12 labor and delivery rooms, 30 private post-partum rooms, 20 newborn nursery beds and 30 private neonatal intensive care unit rooms, along with four Ronald McDonald Family Rooms and a dedicated gift shop.

CHALLENGES

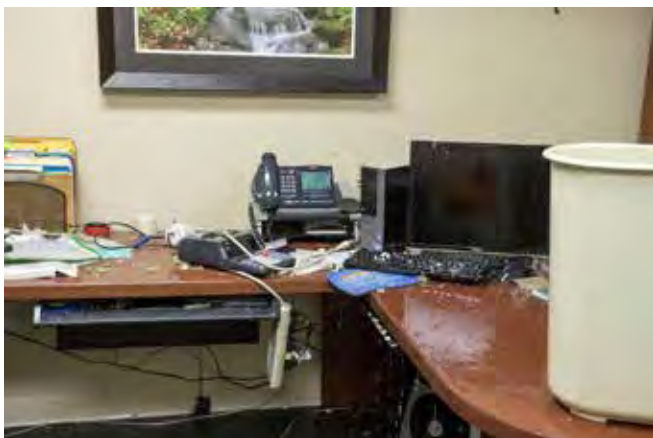
- Infectious disease control protocol followed during restoration;
- All cleaning was tested by a Certified Industrial Hygienist to ensure sanitation and sterilization standards were met;
- Critical barriers erected to prevent cross contamination in other areas of the hospital;
- A negative pressure containment was built around the construction area to allow the hospital to re-open;
- Building was re-certified for patient care by Texas Department of Health;
- Critical timeline and project coordination.

CASE STUDY



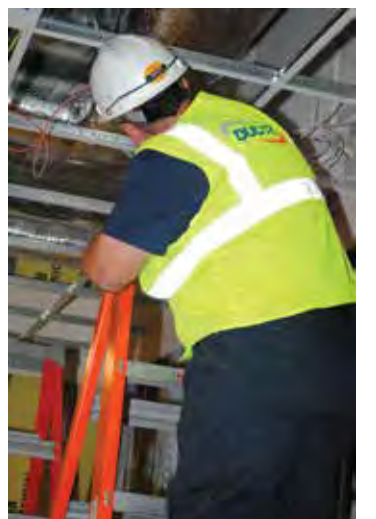
"It very quickly became apparent we had a problem much larger than we could handle on our own or with the local resources in the area. BELFOR was there when we needed the help. They assembled a team of experts and mobilized resources immediately. The remediation plan was executed wonderfully and they kept us informed and involved through the entire process."

Matt Collins
Vice President - Support Services
Medical Center Health System
Odessa, Texas



EMERGENCY RESPONSE AND MITIGATION





24/7 EMERGENCY HOTLINE
800.856.3333

185 Oakland Avenue, Suite 150
Birmingham, MI 48009
248.594.1144 | www.belfor.com

RESTORING MORE THAN PROPERTY

BELFOR 
PROPERTY RESTORATION