



PROPERTY RESTORATION

Case Study: Hewlett Packard Enterprise Houston, Texas

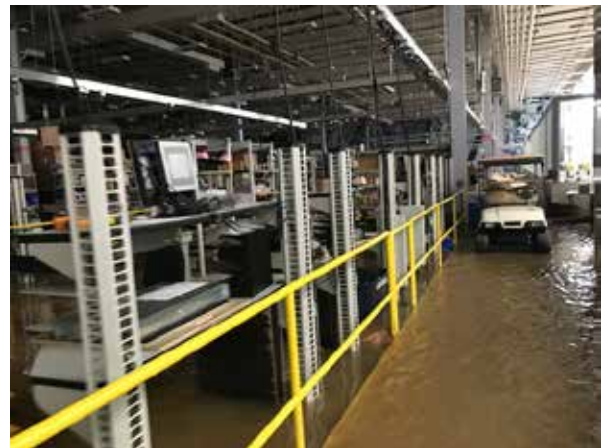
Loss Event: Hurricane Harvey - Flood and Water Damage

Damage: Structural and contents water damage at business campus and major manufacturing/research facility.

In the wake of Hurricane Harvey, the Hewlett Packard Enterprise campus in Houston, Texas, found itself devastated by over 50 inches of rain that hit the Texas Gulf Coast. The 165-acre campus, which serves as a pivotal manufacturing and research division for the technology company, experienced never seen before damage to their property. In total, 16 buildings and parking garages were impacted by flood waters which reached 12 feet in some locations.

DISASTER RECOVERY FACTS - WHAT IT TOOK

- Over 700 personnel, working around the clock to meet the client's needs.
- An estimated 285 million gallons of water were pumped from the flooded structures (buildings, loading docks and parking garages) using 48 pump and vacuum trucks, along with 24 high volume head pumps with 3,500 feet of discharge hose.
- Over 1,081,000 square feet of interior office space, labs, research centers, manufacturing floors and supply space had to have water extracted, building materials removed and hygienically cleaned.
- Over 10.2 miles (linear feet) of drywall and vinyl baseboard were removed, along with 389,000 square feet of carpet.
- Twenty one 30-yard dumpsters were used to haul over 180,000 pounds of debris on a daily basis.
- Pressure washed over 7,000,000 square feet of parking lots, sidewalks, roadways and parking garages.
- Flood damage to the campus' central power plant caused loss of power on campus for 12 weeks. Twenty-four megawatts of generated power were used to provide power to a majority of the buildings on campus and power over 410,000 cfm in dehumidifiers.
- 25,000 gallons of diesel fuel were used on a daily basis to ensure all 105 pieces of rental equipment ran around the clock.
- Over 600 high-power server racks, 50 manufacturing robots and a large amount of equipment were removed from the campus and transported to a 150,000-square-foot temporary warehouse where they were cleaned and processed by BELFOR Technical Service representatives who traveled from eight different countries to Houston to assist with the project.
- The entire campus had to have all the contents, damaged and non damaged, packed out for evaluation, cleaning and disposal. Approximately 3,000 pallets and 81 fifty-three foot trailers were used to transport items to a temporary warehouse.
- Used 6,680 trash bags a day.
- Consumed 14,000 bottles of water and one ton of ice per week.



"BELFOR has proven to be a valuable partner for all of our disaster recovery efforts. Their ability to handle projects of all sizes has been invaluable. What they accomplished on the Hewlett Packard project following Hurricane Harvey was exceptional. We couldn't be happier with the relationship."

RYAN LONGCHAMPS
Director of the North & South America
ISS Facility Management

24/7 Emergency Number

800-856-3333

Corporate Headquarters:
185 Oakland Ave., Suite 150
Birmingham, MI 48009-3433
Toll Free: 888.421.4111
Direct : 248.594.1144
www.belfor.com

Commercial Services ▶

Fire Restoration | Water Extraction | Structural Cleaning & Decontamination | Dehumidification
Mold Remediation | Corrosion Control | Smoke and Soot Removal | Structural Shrink Wrap
Contents Restoration | Document and Media Recovery | Electronics Restoration
Equipment and Machinery Repair & Rebuild | Environmental Services | Air Duct Cleaning
Semiconductor Services | Total Reconstruction Services | Consulting Services

Residential Services ▶

Smoke and Soot Removal | Water Extraction | Structural Dehumidification
Structural Cleaning & Decontamination | Mold Remediation | Environmental Services
Contents Restoration | Document and Media Recovery | Electronics Restoration
Reconstruction Services

HEWLETT PACKARD ENTERPRISE, HOUSTON, TX - HURRICANE HARVEY

A glimpse of the exterior and interior water damage caused by Hurricane Harvey, plus inside the temporary warehouse where BELFOR staged a massive contents restoration effort.

