



BELFOR 
PROPERTY RESTORATION





WATER DAMAGE RESTORATION

Water is the single most long-term destructive substance in the indoor environment – in both its liquid form and vapor form. Excess moisture or flooding can cause structures and personal property to rapidly deteriorate. The problem becomes more serious when the water is unsanitary or clean-up services are delayed.

From a minor leak to a major flood, BELFOR has successfully restored water-damaged structures and property for more than 70 years. We offer 24-hour emergency service by certified water technicians and have an extensive inventory of drying equipment – air blowers, air movers, dehumidifiers, moisture meters, thermal imaging cameras, thermos-hygrometers and more.

COMMERCIAL & RESIDENTIAL RECOVERY SERVICES

Our water damage restoration techniques include:

- Structural drying and dehumidification
- Moisture measurement and records
- Non-invasive leak detection
- Mold remediation
- Corrosion control
- Conservation of machinery, electronics equipment, furniture, files and documents
- Disinfection and decontamination by destroying micro-organisms and bacteria
- Odor neutralization



THE SCIENCE OF STRUCTURAL DRYING

BUYER BEWARE

When water invades your home or business, it is strongly recommended that action be taken immediately. The damaging effects of water can be sharply reduced if intervention is taken within the first 24-48 hours. Even though the damage may look severe, cleanup and restoration can produce amazing results.

Typically, carpet dries in 24 hours. Moderately wet drywall dries in 1-3 days. Hardwood flooring, plaster, concrete and wood may require 7-10 days to dry. Contractors and claims professionals that promise to dry buildings in three days are ignoring scientific principles.

Structural drying is a scientific process that requires professional water damage training and the use of specialized instruments. It is very site-specific. One size never fits all.

BELFOR water damage technicians are highly trained in psychrometrics, the science of drying, and always use IICRC S500 industry standards for professional water damage restoration.

Our technicians are trained to seek out hidden water damage. Water can flow or be captured in seemingly unlikely places. Undetected, it can quickly turn into future problems. All wet materials are identified through moisture inspections involving:

- Infrared Technology
- Electronic Moisture Detection Instruments
- Thermo-hygrometers

Exact and reliable data is critical. Using moisture meters with exclusive proprietary software, technicians carefully measure moisture content. We also monitor and document the drying process on a daily basis until optimal drying standards are met.



ACT BEFORE YOU SINK

When determining what it will take to dry your property, we use a mathematical formula based on many different variables including:

- Impacted square footage?
- Impacted cubic footage?
- What is wet?
- Are materials saturated or damp?
- How many air exchanges are required?
- How many air movers are required?

BELFOR has the industry's most extensive inventory of drying equipment – air blowers, air movers, dehumidifiers, moisture meters, thermal imaging cameras, thermo-hygrometers and more. We also have strong relationships with the country's largest providers of emergency power generation equipment. We keep a large fleet of semi-trailers loaded with equipment and supplies, and strategically position them around the country for rapid response.

DEHUMIDIFICATION

Dehumidification removes moisture from the air and prevents secondary water damage from condensation. Using sophisticated dehumidification equipment, we can produce effective drying results and eliminate environmental concerns.



MOLD - STOP IT BEFORE IT STARTS

If your home or business has had water damage or moisture issues, potentially dangerous mold growth can become a big problem. Mold can begin to grow within 12-24 hours and become visible within 72 hours. Mold can overwhelm even a healthy immune system, so it is important to get rid of active mold growth. If you can see mold growing, the top priority is to remove and safely dispose of it. The question then becomes "how."

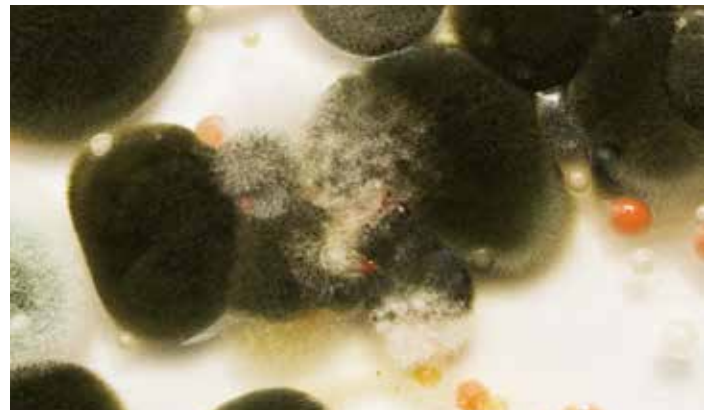
There are many questions to be answered:

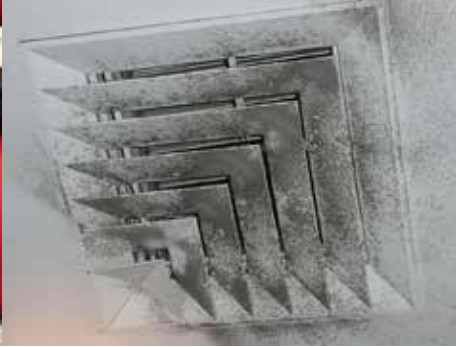
- What kind of mold is it?
- What is the cause?
- How dangerous is it?
- What is the most effective way to get rid of the problem?
- How can it be prevented?

Mold remediation is a specialized process requiring a unique combination of training and ability. BELFOR's professional mold removal teams are considered the best in the industry. We were the first restoration company to issue mold guidelines in 2002, and we co-authored the official industry BSR-IIRC 520 Standard and Reference Guide for Professional Mold Remediation. Our professional services include:

- Initial Air Quality Testing
- Safety Barriers and Cross-Contamination Prevention
- Mold Identification
- Mold Removal and Decontamination
- Mold Removal and Decontamination
- Safe Disposal Services
- Final Clearance Testing
- Reconstruction

Our BELFOR offices across the country are also supported by the BELFOR Environmental division. Experienced in all hazardous materials, BELFOR Environmental has a keen understanding of environmental compliance, safety, health and transportation regulations.





BELFOR

PROPERTY RESTORATION

1.800.856.3333

24-7 NATIONAL EMERGENCY HOTLINE

Corporate Headquarters:
185 Oakland Avenue, Suite 150
Birmingham, MI 48009-3433
Toll Free: 888.421.4111 Direct: 248.594.1144
Fax: 248.594.1133

www.belfor.com