



An unexpected fire. A sudden earthquake. A devastating hurricane. Or maybe just a busted pipe. Disaster can strike anytime, anywhere.

What will you do?

The answer is simple.

**STAY CALM. CALL BELFOR.**

### THE BELFOR PROMISE

To do our very best, every time.

To ensure your best interest is

always at the forefront.

To stand behind our word and

to give you our all —

every second, every minute, every day.

**BELFOR**   
**PROPERTYRESTORATION**

**1.800.856.3333**

24/7 National Emergency Hotline

Corporate Headquarters:

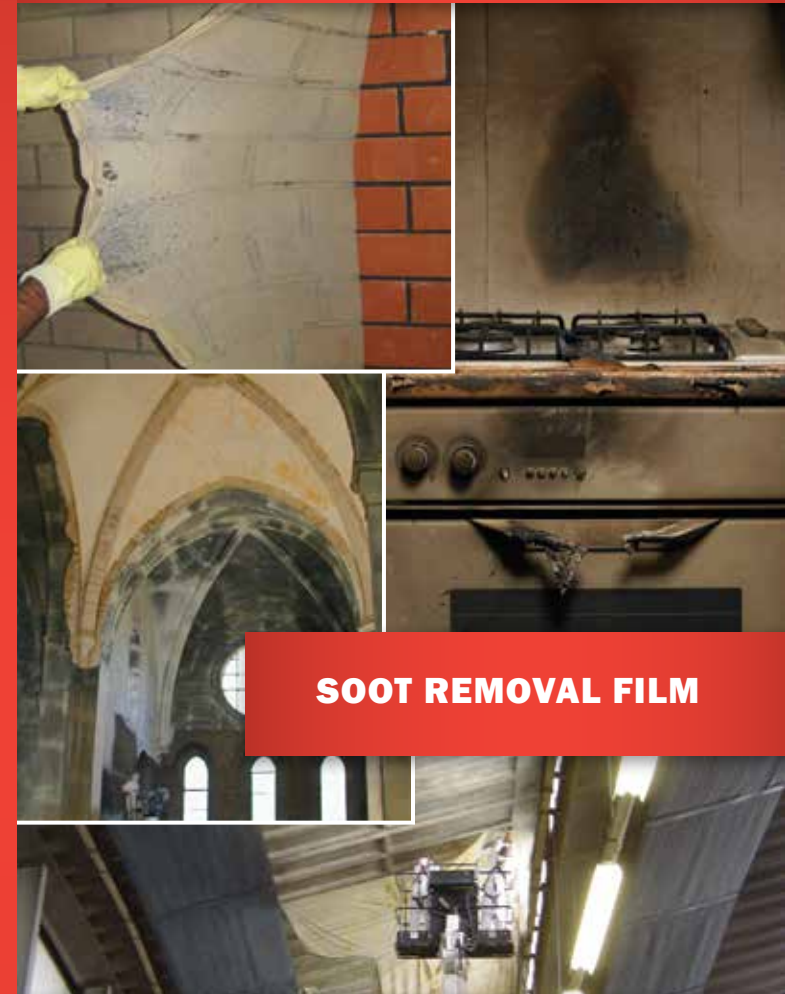
185 Oakland Avenue, Suite 150

Birmingham, MI 48009-3433

Toll Free: 888.421.4111 Direct: 248.594.1144

Fax: 248.594.1133

[www.belfor.com](http://www.belfor.com)



**SOOT REMOVAL FILM**

**BELFOR**   
**PROPERTYRESTORATION**



## FIRE AND SOOT DAMAGE IS FOREVER, RIGHT?

Cleanup after a fire can be daunting. Soot removal is difficult, and damage can be worsened by improper cleaning techniques.

Developed by BELFOR, Soot Removal Film (SRF) is a dry film restoration technique that is an effective alternative to dry or wet cleaning of surfaces affected by soot or dust contamination.

## PROPERTY RESTORATION AND RECOVERY

BELFOR is the global leader in disaster recovery and property restoration, and has more experience with fire damage and soot removal than any other restoration contractor.

Our proprietary, virtually water-free process is highly effective and environmentally-friendly, leaving no residue and no need for final drying.

## ADVANTAGES OF SRF

- More efficient than common dry cleaning techniques.
- Effective substitute for wet cleaning or powder jets.
- Soot does not smear as it does when vacuum-cleaned, brushed-wiped off.



- No further penetration of contamination into the surface.
- Immediately ready for use — little preparation required.
- No (or very little) enclosure is required — dust-free disposal of contaminants.
- Almost non-destructive and non-corrosive technique — very important for facades and wood.
- Suitable for critical environments and materials where the use of water is prohibited.

After many years of research and experience, BELFOR has developed different versions of the SRF product with various additives that are effective for diverse conditions of fire damage restoration:

- **SRF 4 NA** – Highly optimized product without ammonia
- **SRF 4 UV NA** – Resistant to ultraviolet light; can be removed or pulled off many days after being applied
- **SRF Adhesion Reducer or Soot Removal Granulate** — For chemical or mechanical highly sensitive objects (paintings, frescos, wooden furniture, etc.), an adhesion reducer is added or a jet with extremely soft, semi-moist granulate is applied.
- **SRS** – Small areas may be cleaned using the BELFOR soot removal sponge.

## A SOLUTION TO SOOT DAMAGE

SRF is a white liquid that is either sprayed or applied with a soft brush onto the surface that needs to be restored. Once applied, it takes approximately 24 hours to dry.



Dry film is removed — along with the soot, dust or other source of contamination — by pulling it off the affected surface.



Surfaces such as concrete, brick, stone, plaster, dispersion paint, wood, plastic and metal that are dry or slightly affected will typically yield good results.

## FIRE AND SOOT DAMAGE?

BELFOR can help. Call our 24-hour hotline.

**1.800.856.3333 | 1.800.800.BELFOR**

Or visit [www.belfor.com](http://www.belfor.com).

**BELFOR**   
PROPERTY RESTORATION