



**WE MAKE IT  
UNDONE**

**BELFOR: The no. 1  
in damage restoration  
worldwide.**



**BELFOR** (B)

# **BELFOR.**

**Smoke damage, water ingress events, mould are some of the damage that BELFOR deals with on a regular basis.**

**Regardless of the type of damage that can cause your business to halt or your property to be damaged, BELFOR's expertise and dedication will go the extra mile to deliver our promise:**

**WE MAKE IT UNDONE.**

# THE BELFOR FAMILY MAKES US NO. 1

**BELFOR is more than a high-performance international Group. We see ourselves as a family, at home wherever our offices are located.**

The people working at BELFOR are our most important success factor. They have the right expertise for every type of damage. And they bring our strong positive culture to life each and every day.

**#berespectful #becommitted #betrue**

To put it simply, we are a dedicated team that offers you 24/7 support tailored to your specific needs.







**24/7 worldwide**  
for you when  
disaster strikes



**550+ branches**  
for a quick drive to  
your location



**14,000+ employees**  
for any size  
of damage



**350,000+ projects p.a.**  
for more sustainable  
restorations



**Every 90 sec.**  
**a damage occurs**  
for professional and  
immediate help





# SUSTAINABILITY IS IN OUR DNA

**Restoration is more environmentally sustainable than discarding and buying new. This makes sustainability a logical part of our business model - with a positive impact on the way we do business.**

Wherever the circumstances allow, we do all we can to save on resources and protect the environment throughout our operations. Complete recycling of waste water consumed in the process of decontamination has become standard practice.

In addition, BELFOR's Technical Centre constantly develops our own restoration agents, which make restoration highly successful and efficient, while also reducing environmental impact.

Besides our work, we are committed to sustainable projects. For instance, we support Treedom® in boosting its tree population.

# UNDONE DOES NOT COME BY CHANCE

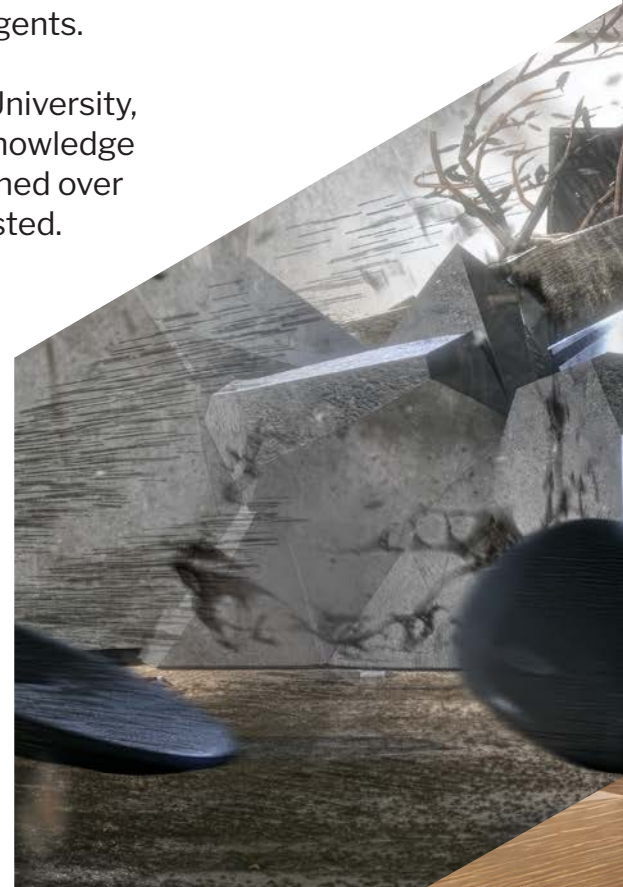
**At BELFOR's Technical Center, our research team is constantly developing even better tools and innovative methods for damage restoration and decontamination.**

Always with an eye on: Complying with health and environmental regulations. One example: Our Quick Corrosion Test. This makes it possible to identify corrosion hazards without the need to use special chemicals or expensive laboratory tests.

And another one: Our Soot Removal Film. This special latex film efficiently removes soot even from rough surfaces, without the need for water and is fully recyclable.

In our in-house laboratories, we analyze samples taken from our disaster areas. This allows us to choose the best procedure for your damage and to use the right propriety materials and decontamination agents.

Through BELFOR University, we ensure all the knowledge and experience gained over the years is not wasted. We transfer all the knowledge and experience to our personnel globally.







# SIZE DOES NOT MATTER

Large, small or custom-made - no matter what the type or size of your damage, BELFOR supports corporate owners and companies, (industrial) businesses as well as shipping and offshore companies. We work in a coordinated way with all the stakeholders to bring you back to business efficiently.







## **Our main services for all industries**



**Fire damage  
decontamination/restoration**



**Mould remediation**



**Water damage  
(floods, burst pipes, leaks)**



**Natural disasters**



**Restoration of marine vessels  
and offshore platforms**



# OUR PROCESS FOR YOUR UNDONE EXPERIENCE

We are here to help you and provide answers to many of the questions you may have. From the moment you begin working with BELFOR, you benefit from years of experience in disaster restoration. In the event of a loss, our procedures make sure that the proper steps are taken to ensure an efficient recovery. This helps to minimize or prevent the waste of precious time.

## DAMAGE ASSESSMENT

- Detailed overview/ documentation of the current condition

## IMMEDIATE LOSS MITIGATION MEASURES FOR

- Buildings/facilities/ supplies
- Electronics
- Production machinery and facility equipment
- Inventory
- Documents

## RESTORATION SERVICES AND COST PLAN

- Buildings/operating equipment/supplies
- Electronics
- Production machinery and facility equipment

## RECOVERY AND WASTE DISPOSAL SERVICES

- According to legal regulations
- Consideration of re-usability/ recycling
- Calculation of costs for waste disposal, controlled and partial or complete demolition



### RESTORATION OF THE BUILDING

- Drying
- Dismantling and renovation
- Reinstatement

### RESTORATION OF ELECTRONICS, MACHINERY AND EQUIPMENT

- Electronics restoration – also mobile
- Production machinery and facility equipment restoration

### DISPOSAL, DEMOLITION

- Handling of hazardous materials incl. disposal/recycling
- Machine dismantling
- Partial/complete demolition

### Support from the very beginning: BELFOR Restoration Specialist

- Individual consulting for every loss event
- Personal contact for the entire process
- Complete record keeping and reporting of the entire loss process
- Cost-efficient and transparent communication during the project lifecycle

**DO YOU HAVE QUESTIONS  
FOR US? DO YOU NEED  
IMMEDIATE ASSISTANCE?**

**WE ARE HERE TO HELP YOU.**

**24-hour emergency hotline: +65 6848 1110**

**You can also obtain more information  
from [www.belfor.com](http://www.belfor.com)**



**BELFOR** (●)



### **Singapore (Regional Head Office)**

BELFOR (Asia) Pte Ltd

Email: [inquiries@sg.belfor.com](mailto:inquiries@sg.belfor.com)

### **South East Asia**

BELFOR Restoration Services Pte Ltd

Email: [inquiries@sg.belfor.com](mailto:inquiries@sg.belfor.com)

### **Japan**

BELFOR (Japan) Co., Ltd

Email: [inquiries@jp.belfor.com](mailto:inquiries@jp.belfor.com)

### **Korea**

BELFOR (Korea) Ltd

Email: [inquiries@kr.belfor.com](mailto:inquiries@kr.belfor.com)

### **Malaysia**

BELFOR (Malaysia) Sdn Bhd

Email: [inquiries@my.belfor.com](mailto:inquiries@my.belfor.com)

### **Taiwan**

BELFOR Restoration Services Pte Ltd –

Taiwan Branch

Email: [inquiries@tw.belfor.com](mailto:inquiries@tw.belfor.com)

### **Thailand**

BELFOR (Thailand) Ltd

Email: [inquiries@th.belfor.com](mailto:inquiries@th.belfor.com)

**[www.belfor.com](http://www.belfor.com)**